



Established 1925

KANSAS GEOLOGICAL SOCIETY

BULLETIN

Volume 85 Number 6

November—December 2010

IN THIS ISSUE

Profile: Dr. John Gries
Page 16

Memorial: Bill Owen
Page 14

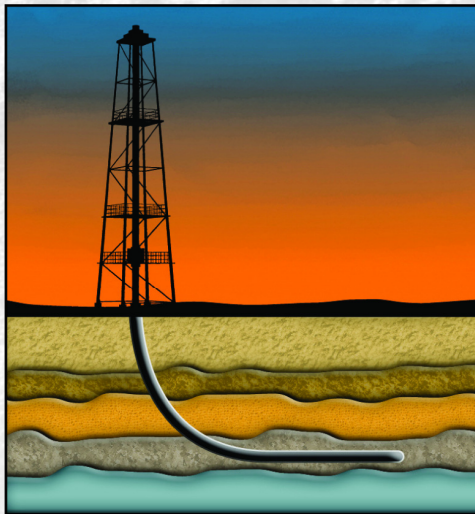
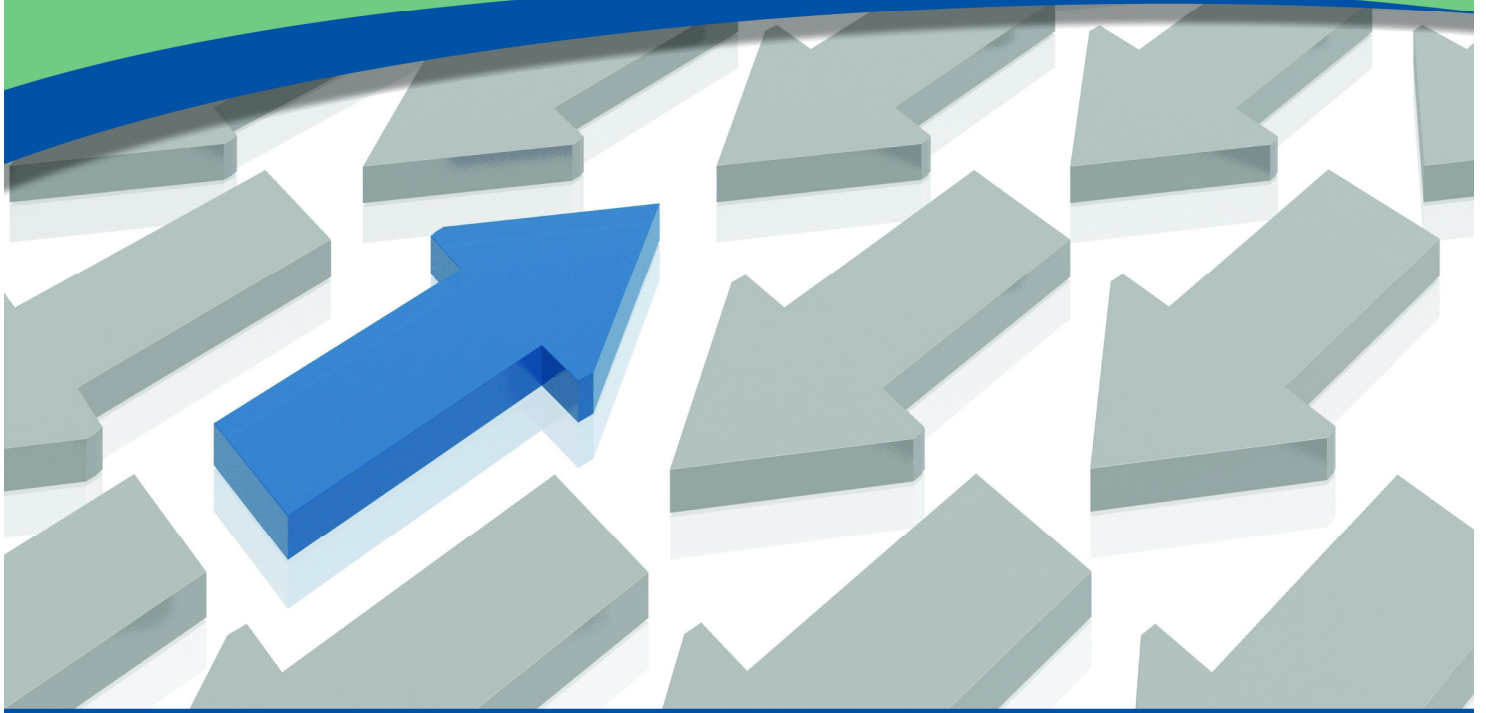
Election Edition

Meet The Candidates
On pages 18-20

Photos of Field Trip
Pages 21-23



Looking for Accurate Directional Data?



Directional Survey Plus data now available online

Let TGS lead you in the right direction

Get on the right well path with Directional Survey Plus (DS+) data. DS+ data moves beyond the simple capture of measured depth, azimuth and inclination to create the most accurate spatial representation of the well path, from surface to total depth.

TGS researches DS+ wells to identify all wellbores, entering all runs and composites in original form with extensive metadata and superb quality control. The data are then processed and composited using proprietary workflows. The resulting standardized, high quality data is available in multiple industry formats.

Current coverage includes many of the hottest basins in the US, and multi-client coverage is expanding everyday. TGS also provides DS+ processing to clients worldwide.

Find out more at www.tgsnopec.com/welldata
888-LOG-LINE or WellData@tgsnopec.com



Geophysical
Products



Geological
Products



Imaging
Services



www.tgsnopec.com

Table of Contents

Features:

Memorial: Bill Owen	14
Profile: John Gries	16
Meet The Candidates	18
KGS Survey Results	24

Departments & Columns:

KGS Tech Talks	4
President's Letter	7
Advertiser's Directory	8
From the Manager.....	9
KGS Board Minutes	17
Professional Directory	27& 28
Exploration Highlights	30
Kansas Geological Foundation	32
KGF Memorials.....	34

ON THE COVER:

Participants of the Fall Field Trip led by Sal Mazzullo, Brian Wilhite, Darwin Boardman, Robert Turner, Beau Morris and Cory Godwin.. Trip was taken into SW Missouri, NW Arkansas and NE Oklahoma, looking at outcrop lithostratigraphy & depositional architecture as models for subsurface petroleum exploration. More photos on pages 21-23.

CALL FOR PAPERS

The Kansas Geological Society Bulletin, which is published bimonthly both in hard-copy and electronic format, seeks short papers dealing with any aspect of Kansas geology, including petroleum geology, studies of producing oil or gas fields, and outcrop or conceptual studies. Maximum printed length of papers is 5 pages as they appear in the Bulletin, including text, references, figures and/or tables, and figure/table captions. Inquiries regarding manuscripts should be sent to Technical Editor Dr. Sal Mazzullo at salvatore.mazzullo@wichita.edu, whose mailing address is Department of Geology, Wichita State University, Wichita, Kansas 67260. Specific guidelines for manuscript submission appear in each issue of the Bulletin, which can also be accessed on-line at the Kansas Geological Society web site at <http://www.kgslibrary.com>

SOCIETY Technical Meetings

Nov. 2—Joint Meeting with SEG— Dr. Carl Sondergeld— “Rumblings from the Laboratory: Past, Present & Future” NOTE: This meeting will be held in the Bank of American Auditorium (Broadway & Douglas).

Nov. 16—Dr. Randy Keller— “Ancestral Rocky Mountain Deformation in the Mid-Continent then & Now”

Nov. 30— Dr. Luis Gonzalez, KU— “The Onset of Global Climate Change: Human Induced and Unstoppable”

Dec. 7—Dr. Marvin Carlson— TBA

Dec. 21—Dr. Leigh Stearns, KU— TBA

Note of Appreciation

The members and their guests who attend the Technical Programs of the Kansas Geological Society deserve a "pat on the back". The only rewards that speakers from as far away as Houston and Denver receive from the KGS are a large and attentive audience and a free lunch. This also applies to some excellent local speakers.

It takes a large amount of time to prepare a presentation and I know that one of the reasons that speakers are available is the recognition they receive from audiences in Wichita.

It should also be noted that the Wichita Law Library Conference Room would not be available if it were not for the efforts of Phil Knighton. The former venue, Bank of America Auditorium, which is under a different ownership charges \$100 per hour.

Location for Technical Meetings

*All KGS technical presentations are held at 12:30 p.m. at the **Wichita Bar Association**, located at 225 N. Market, ground floor conference room, unless otherwise noted.*

Note: For those geologists who need 30 points to renew their licenses, there will be a sign-in sheet at each presentation and also a certificate of attendance.



BOARD OF DIRECTORS

PRESIDENT

Rick Saenger

PRESIDENT-ELECT

Doug V. Davis

SECRETARY

Marjorie Noel

TREASURER

David Clothier

DIRECTORS

Lynn Watney
Robert O'Dell
Ken Dean

ADVISORS

Jon Callen
Ernie Morrison

COMMITTEE CHAIRMEN

Advertising

Kent Scribner

Advisory

Jon Callen
Ernie Morrison

Annual Banquet

Bob Bayer

Budget Committee

Dave Clothier

Bulletin

Sal Mazzullo

Continuing Education

Robert Cowdery

Distinguished Awards

Lynn Watney

Directory

Larry Richardson

Environmental

Kent Matson

Field Trip

Larry Skelton

Fishing Tournament

Randy Teter

Future Plans

Tim Pierce

Golf

Paul Gunzelman

Historian

David Barker

Investment

Larry Skelton

Library

David Clothier

Membership

Roger Martin

Nomenclature

Ted Jochems

Picnic

Larry Friend

Public Relations

John H. Morrison, III

Shooting Tournament

Marjorie Crane-Noel

Technical Program

Robert Cowdery

Ticket Sales

Larry Richardson

Robert Cowdery

Bill Shepherd

A.A.P.G. DELEGATES

Ernie Morrison	Robert Cowdery	Doug Davis
2010	2012	2012

BULLETIN STAFF

EDITOR

Sal Mazzullo
salvatore.mazzullo@wichita.edu (316) 978-7211

ADVERTISING

Kent Scribner
Stelbar Oil Corp. (316) 264-8378

PROFILES/MEMORIALS

Robert D. Cowdery
Consultant (316) 267-9030

EXPLORATION HIGHLIGHTS

John H. Morrison, III
Independent O&G (316) 263-8281

STATE SURVEY

Rex Buchanan
KS Geological Survey (785) 864-3965

SOCIETY NEWS

KGS Library (316) 265-8676

EDITOR EMERITUS

Wes Hansen (316) 863-7313

K.G.S. LIBRARY

PHONE 316-265-8676 FAX 316-265-1013

email: frontdesk@kgslibrary.com or

Web: www.kgslibrary.com

LIBRARY MANAGER

Rebecca Radford 265-8676

manager@kgslibrary.com

The KGS *Bulletin* is published bi-monthly by the Kansas Geological Society, with offices at 212 North Market, Wichita, Kansas 67202 Copyright 2010, The Kansas Geological Society. The purpose of the *Bulletin* is to keep members informed of the activities of the Society and to encourage the exchange and dissemination of technical information related to the Geological profession. Subscription to the *Bulletin* is by membership in the Kansas Geological Society. Limited permission is hereby given by the KGS to photocopy any material appearing in the KGS *BULLETIN* for the non-commercial purpose of scientific or educational advancement. The KGS, a scientific society, neither adopts nor supports positions of advocacy, we provide this and other forums for the presentation of diverse opinions and positions. Opinions presented in these publications do not reflect official positions of the Society.

TRILOBITE TESTING INC

Eleven Trucks Serving
Kansas - Colorado - Texas
Nebraska - Illinois

Slickline services using the same
Alpine Electronic Pressure
Guages as used on DST's

Back pressure testing (G1 & G2)

DST's

1-800-728-5369

FAX: 1-785-625-5620
trilobite @eaglecom.net

SHOPS LOCATED IN:

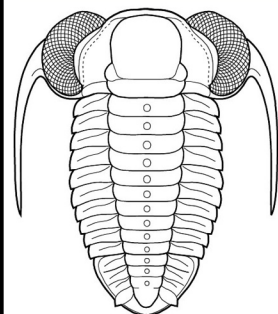
Hays, KS

Scott City, KS

Pratt, KS

Hugoton, KS

Clay City, IL



CAN YOU NAME THE CRITTER?

Sponsored by Trilobite Testing, Inc.

Is your paleo up to date?

If you know the name of the trilobite,
submit your guess via e-mail to
manager@kgslibrary.com

Remember that *Trilobite Testing* is
sponsoring your efforts, so be sure to thank
Paul Simpson the next time you see him.

Kyle Day correctly identified last issue's Trilobite

Peachella iddingsi

**Bulletin committee members and PhD's in
Paleontology are prohibited from entering.**

The Kansas Geological Society Wishes To Thank The Following For Their Support Of KGS Shooting Tournament

Allied Cementing
Andy's Mud & Chemical
Basic Energy
Beredco Drilling
Buckeye Supply
Central Kansas Surveying
Covey, The Well Watchers
Kent Crisler
Diamond Testers
Dixon Energy
Eagle Creek Corp.
Edwards Consulting
Grand Mesa
Gressel Oil Field
Hedke-Saenger Geoscience
H&B Petroleum Corp.
Hesse Petroleum
The Independent
Log Tech, Inc.
Log Tech, Inc. of Kansas
Lockhart Geophysical
Roger Martin Geo.
McDonald Tank
MBC Well Logging

Ernie & Pat Morrison
Mud-Co
Mull Drilling
Murfin Drilling
NALCO Chemical
National Oilwell
NCRA
Paragon LLC
Pratt Well Service
Raymond Oil Co.
Larry Richardson
Ricketts Testing
Don Shawver
Sunrise Oilfield Supply
Superior Testing
Superior Well Service
Sweetman Investments, LLC
Theis Dozer Service
Thoroughbred Associates
Tidelands Geophysical
Tucker Wireline
Trident Steel
Trilobite Testing

President's Letter

Dear Members;

Happy fall season to you all! As you can tell by the picture, I did not opt for the usual “stodgy” presidential picture, but a more personality-oriented view that reflects my peculiar sense of humor. I’ve never taken myself very seriously, have always enjoyed a good laugh and I hope that you too get a laugh from it. The picture was taken by Stephanie MacLeod in a quaint store in Essex, Massachusetts.

Since the last letter I have again embarrassed myself at our Sporting Clays event, but not bad enough to **not** claim the third place prize in the last flight of our 59 participants. It is very difficult to figure out how many clays you have to miss to get into the last flight prizes. As always, all participants enjoyed the event, and, thanks to our generous sponsors, we had great flight prizes and door prizes. I would like to recognize and thank Larry Richardson for organizing this very popular event over the years.

We have undertaken several initiatives this year. The Membership Survey was issued to help identify or future focus and direction of the Society, paper library and Walter’s Digital Library. While we did not receive the members response that we had hoped, it is useful in quantifying membership trends and what our members view as important services. The results and some analyses by Tim Pierce and Paul Gunzelman are printed in this bulletin. Another initiative that was undertaken is the Employee Review and Planning process. An important aspect of this initiative is to align the Board’s vision of the future direction of the library to the goals of our employees for the annual to five year time-frames. We also contracted Net Systems to install and maintain a new server. The old server (which, I think, was steam powered) was living on borrowed time and in need of replacement. While the process of determining our needs was, at times, frustrating to those involved, I believe that the best interests of our membership was served by the due diligence of the Board aided by the needed expertise of Kurt Look, David Bayer, and Chuck Brewer. Thank you gentlemen for your willingness to be involved in this process.

On a sadder note, we have lost some good friends who will be greatly missed. As our membership ages, I’m afraid that we will see an overall decline in membership population. It is very encouraging to see the quantity and quality of students and graduates of our Kansas Universities that are becoming involved with our society and area businesses.

We have had some good things happen with the Walter’s Digital Library this year. The programming progress and enhancements, begun under Ernie Morrison’s Presidency and developed through Lynn Watney’s Presidency, on the Digital Library has been very impressive. I think that our membership in the WDL will continue to grow as Kurt Look and Eileen Jones improve the imaging, speed, and functionality of our system. Both of them are very responsive to the needs of the library and membership. We are very fortunate to be able to utilize their skills.

I would like to give a big “Thank you” to Bob Cowdery for assembling an excellent slate of Technical Talks over this past year. Bob has already lined up great talks for the Spring Session.

And finally, I would like to thank our membership for your allowing me to serve our society over this past year. It has passed very quickly.

Best regards;
Rick Saenger



Photo courtesy of Stephanie McLeod



KANSAS STATE UNIVERSITY

GEOLOGY
DEPARTMENT

GRADUATE EDUCATION
for active professionals

<i>Through:</i>	<i>Leading to:</i>
Workshops	Academic credits
Field Trips	Certificates (pending)
Distance Education	M.S. degree

With specializations in:
 Petroleum Geology
 Groundwater
 Exploration Geophysics
 Environmental Geochemistry

Information:
 KSU Continuing Education: www.dce.ksu.edu
 KSU Geology Department: www.ksu.edu/geology
 KSU Graduate School: www.ksu.edu/grad
 or e-mail George Clark, interim dept. head: <grc@ksu.edu>

ADVERTISER'S DIRECTORY

	<i>page</i>
Allied Cementing Company, Inc	25
Duke Drilling	25
GeoCare Services AAPG	13
Kansas Geological Foundation	28
Kansas State University	8
Lockhart Geophysical	25
LogSleuth-MJ Systems	33
MBC Well logging	25
Murfin Drilling Company, Inc	25
Oneota Resources	11
PARAGON Geophysical Services, Inc	13
Professional Directory	23-24
Sunrise Oilfield Supply	25
TGS-NOPEC Geophysical Company	2
Tomcat Drilling	25
Trilobite Testing	6
Walters Digital Library	12
Weatherford	35
Well Enhancement Services, LLC	12

ADVERTISER'S RATES: 2010

Full Page	B&W	Color
6 issues	\$2,000	\$2,500
3 issues	\$1,080	\$1,325
1 issue	\$480	\$525
1/2 Page		
6 issues	\$1,000	\$1,500
3 issues	\$540	\$825
1 issue	\$225	\$350
1/4 Page		
6 issues	\$600	\$900
3 issues	\$325	\$525
1 issue	\$150	\$250
1/8 Page		
6 issues	\$300	\$500
3 issues	\$175	\$325
1 issue	\$75	\$185
Professional Ad (Business Card)		
6 issues	\$90	\$180

For one-time ads, call Rebecca at 316-265-8676

Save The Date!!

KGS Annual Banquet

Friday

January 22, 2011

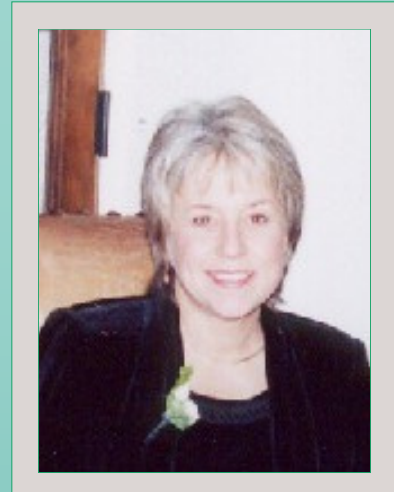
**Petroleum Club
of Wichita**

From The Manager

Dear Members,

As we are winding down another year, I would like to thank Rick Saenger and the Board of Directors for their input and steadfastness in helping me to make some important decisions this year which help to keep this library open and available to all of its membership. It is also very important to recognize the staff at the KGS Library who help me keep this place running smoothly. Each person has an important role in keeping data available and helping the members. Please thank them when you see them, it really does make a difference.

We have another great slate of candidates willing to run and serve the KGS. You will find their bios starting on page 18. You will be receiving your ballot in the mail soon, please take time to vote and support your Society. Ballots will be due December 1st.



Doug Davis and myself attended the 6th Annual Energy Library Conference in San Antonio in early October. This is always an informative conference, learning from other libraries how their operations work, what works and what doesn't, keeping up with the changing technology and sharing what the KGS has accomplished with our digital on-line library. If you are a KGS member and have not checked out the new Walters Digital Library, you might want to consider looking into it. We have re-worked the program with the expertise of Kurt Look and Eileen Jones from the Survey. New data flows into our system on a nightly basis so the program is much more up-to-date than ever before. Also, many seem to not be aware that we keep a list of all new data coming into the Paper Library on our website. If you go to www.kgslibrary.com and look for the link called: KCC Boxes and Logs, you can click on this link and download the list of new data received. Not all of this will be in our paper files yet but we can get you access to the data if you ask staff to assist you.

I also want to thank all of the committee chairs for their hard work in making KGS events happen. An event really does take some work to pull off and make it profitable. They all deserve our thanks! And of course, thank you to all of you who support the events.

Wishing you all a wonderful holiday season!

Respectfully submitted,

Rebecca Radford

Manager



Let Us Print Your Geo Reports
And Save Your Time For Finding More Oil & Gas
Top Quality Color Printing For Our Membership
Email your files to: tammy@kgslibrary.com

The Kansas Geological Society & Library



The
2011 AAPG MID-CONTINENT
SECTION MEETING

Oklahoma City, Oklahoma
Saturday through Tuesday, October 1st - 4th 2011

www.2011AAPGMCSSectionMeeting.org

*Plan to attend the 2011
AAPG Mid-Continent
Section Meeting*

Jointly Hosted By The
Oklahoma City
Geological Society
And The
Oklahoma City
Geological Foundation

**Below is a screen shot of the KGS website where you now access the
Robert F. Walters Digital Library
www.kgslibrary.com**

Kansas Geological Society & Library | Home - Mozilla Firefox

File Edit View History Bookmarks Tools Help

http://www.kgslibrary.com/index.cfm

Most Visited My Yahoo! WDL Bloomberg.com: Ener... Gmail - Inbox (1) - ka... Google The Kansas Geologica... Fun With Document T... Kansas Geologica

powered by **YAHOO! SEARCH** Search PDFCreator Options

Bloomberg.com: Energy Prices My Yahoo! Find a Specific Bug **Kansas Geological Society & Lib**

Kansas Geological Society & Library Founded in 1923

Sign in to Robert F. Walters Digital Geological Library

User Name Password

Home About Officers Bulletins Events Tech Talks Membership Links Contact Feedback

Society

The Kansas Geological Society is composed of geological professionals from across the country. The Society hosts many educational lectures and social functions and maintains a library of geological data.

The Kansas Geological Society and Library is located in the Landmark Square Building, just north of the corner of Market and First Street in Wichita.

[Bulletin: November - December 2009](#)

Library

The Kansas Geological Society Library has the most complete collection of oil and gas well data for the State of Kansas and surrounding areas. Donated by industry since 1923.

Robert F. Walters Digital Geological Library has 1,018,425 digital documents and logs available. [See](#) the count by county.

Walters Digital Library New Software Review

Tuesday, January 5, 2010

We will conduct a class on the new software for the Walters Digital Library

Please plan to attend and bring your questions and suggestions

12:30 PM

Wichita Bar Association

225 N. Market

The KGS Library

Sign In Here

Oneonta Resources, LLC

Michael Bradley
518 17th Street, Ste 1000
Denver, Colorado 80202

Phone: 970-222-7530
Fax: 303-374-7912
lonetree9@earthlink.net

Kansas 3-D Projects



WOULD YOU LIKE TO INCREASE YOUR PRODUCTION AT A FRACTION OF THE COST OF HORIZONTAL DRILLING?



Well Enhancement Services, LLC is jetting laterals utilizing new technology and coiled tubing. We now have the ability to place hundreds of gallons of acid hundreds of feet away from the well bore. This allows us to not only enhance existing production but to produce reserves previously unreachable. It has established itself by repeatedly increasing production in both new and existing wells. Contact us for more information, questions or to schedule your next well with **WES**.



“Tap into success.....with WES”

Please Contact Us:

Phone: (785) 625-5155

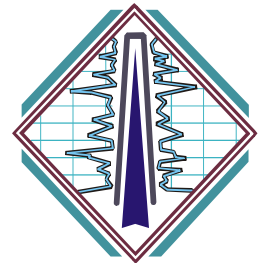
Fax: (785) 625-4151

Field: (785) 259-4638

wesofhays@hotmail.com
Box 87, Schoenchen, KS 67667



Robert F. Walters Digital Library
View Millions of Documents!



NEW SOFTWARE
HAS ARRIVED!!

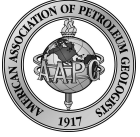
We have a new address

www.kgslibrary.com

Membership Details

If you are a member in good standing of the Kansas Geological Society Library, you can purchase a yearly membership to the WDL for an additional \$600.00/yr.

If you do not belong or qualify to belong to the KGS library, you can purchase a yearly membership to the WDL for \$2000.00 /yr.



Security for AAPG Members
& Their Families
Through Group Insurance

Life
Health
Dental
Disability
Auto and Homeowner
Supplemental Plans

AAPG's
GeoCare Benefits Insurance Program
P. O. Box 189
Santa Barbara, CA 93102-0819
800-337-3140
E-mail: geocarebenefits@agia.com
www.geocarebenefits.com

Kansas Geological Foundation Video / DVD Collection

The KGF has an extensive collection
of videos available for check-out
at no charge.
Only pay for shipping back.

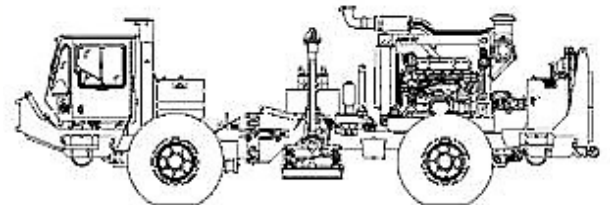
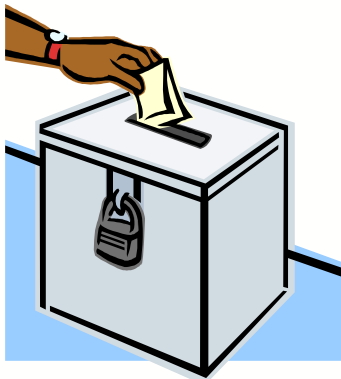
These are ideal for classroom or
general public viewing.

See the web for
titles & descriptions
www.kgfoundation.org

Call 316-265-8676
Ask for Janice to check out videos

Watch for your Ballot in the mail.

**Ballots for KGS officers are due
back by Dec. 1st!**



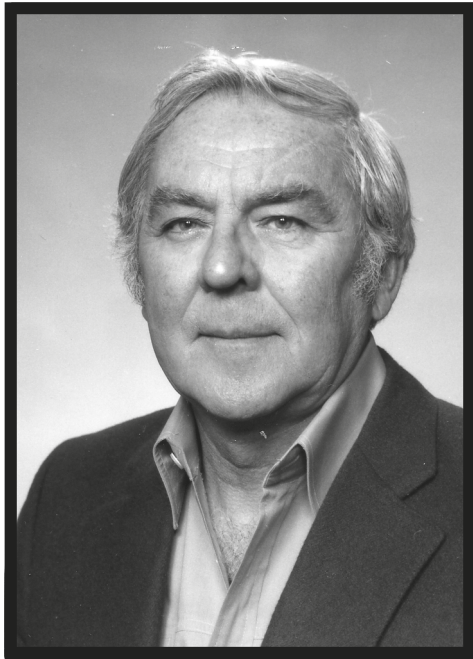
~The TOP CHOICE for 3D SEISMIC~

John H Beury III ~ Pres John Aguilar ~ Op. Mgr.

PHONE (316) 636 - 5552 FAX (316) 636 - 5572

3500 N. Rock Rd., Bldg 800, Suite B
Wichita, KS 67226

paragon@paragongeo.com



With the passing of Bill Owen on Saturday, September 25, the oil community lost one of its most prominent members and the geologic profession lost one of the most successful geologists of this area.

Bill was born in Tulsa Oklahoma in 1922 and attended Tulsa University for a short period before leaving in 1941 to enlist in the Army Air Force. He had a very outstanding career in the Air Force. F which included flying 35 missions over Japan and receiving the Purple Heart and the Distinguished Flying Cross. He then joined his sister, Helen and her husband, E. Louis Birmingham in Wichita. Bill graduated from Wichita University in 1950 as a geology major.

In 1954 he joined a good friend, Todd Aikins, another geologist to form Thunderbird Drilling and they were partners for nearly 40 years. Among their accomplishments was the drilling of the discovery well for the Tobias Field a large field in Rice County, Kansas. This was drilled on a prospect developed by John Brewer. In conversation with an individual who was employed by Thunderbird, he remarked what a pleasure it was to work for the company and how honest and easy, Bill Owen was to work for.

After retirement, Bill continued to pursue his love of golf and fishing. One of the courses that he played was St. Andrews in Scotland and it remained a favorite with him. For many years he would take the entire family for fishing at Minaki, Ontario.

Bill was a member of many organizations including, but not limited to: Wichita Country Club, Petroleum Club, The Flying Birdmen and the Bulls and Bears Investment Club. He was former member for many years of the Kansas Geological Society.

He is survived by his wife, Brenda daughters, Wendy Owen Gebhart and Carol Owen Becner, son Kirk William Owen., stepchildren Emily Bump Fromm, John Clayton Bump, 3 grandchildren, 3 step-grandchildren.

The family has designated The ARC of Sedgwick County. A memorial has also been established with the Kansas Geological Foundation.

Memorial Service for Don D. Strong

A memorial service was held October 2, 2010 in Holyrood Kansas for Don Strong who passed away in January in Arkansas. It was attended by Bernie Lounsbury and wife Mary, Jay McNeil and wife Marilyn, Bill Shepherd and wife Annetta, Bob Cowdery and wife Sue. Also attending was Carolyn Roby, widow of Dick Roby and Sandra Askey, wife of KGS member Philip Askey, who said a few words about Don. There were many family members and residents of Holyrood also in attendance. A local honor guard participated as Don was a veteran of the Korean War.

Kansas Geological Society Board Minutes

September 14, 2010 Mr. Rick Saenger called the meeting to order at 11:36 A.M.

FINANCIAL REPORT/MANAGERS REPORT

- A. **Treasurer's Report-** Mr. Clothier presented us with the Treasurer's report for August 2010. Not much activity this month as there are no CD's expiring until October. Mr. Clothier was looking into CD rates at Fidelity. *Mr. Davis moved to accept the Treasurer's report as presented, Mr. Watney seconded the motion and the motion passed unanimously.*
- B. **Manager's Report-** Mrs. Radford presented the Manager's Report as of August 31, 2010. The month proved to be okay for the paper library with a net income of \$2,212.65. Monthly income was \$58,440.08 and expenses were \$56,227.43. When the library net income is combined with the WDL net income of \$9,160.79, the net income for the month came to a gain of \$11,373.44. It is noted that payroll is down due to the start of the school year; however, the Library did hire a new employee, Bonnie. The Society has 705 members, the Library has 239 members and WDL has 175 members.

OLD BUSINESS

- A. **Update on Membership Survey-** No new changes.
- B. **Employee Review Update-** Mr. Callen and Mr. Morrison recommend meeting with Mr. Saenger and Mrs. Radford to figure out some common ground as to what to expect from all employees.

NEW BUSINESS

- A. **Budget Committee-** A budget meeting will be scheduled before October Board meeting.
- B. **Membership Directory-** Many members would like to update the membership directory. No photos in the printed publication, however, could make a "members only" section on KGS website that would have photos.
- C. **Laptops for KGS Society-** A new laptop is needed for the Society. The current laptop in use is the Foundations and it's outdated.

ADJOURNMENT- *Mr. Clothier motioned to adjourn the meeting at 12:32 p.m., Mr. Davis seconded the motion and the motion passed unanimously.*

October 12, 2010 Mr. Rick Saenger called the meeting to order at 11:41 A.M.

FINANCIAL REPORT/MANAGERS REPORT

- A. **Treasurer's Report-** Mr. Clothier presented us with the Treasurer's report for September 2010. CD #300147 at Kanza Bank is up for renewal October 21. Currently Fidelity is offering CD's for below 1% and Capital Federal is offering at around 1.3%. Mr. Clothier is checking into moving CD to Capital Federal. There was also discussion about closing the money market account at Securities America. The idea is to move half the money to account at Intrust and the other half to another CD which would be up for renewal soon. *Mrs. Noel moved to accept the Treasurer's report as corrected. Mr. Davis seconded the motion and the motion passed unanimously.*
- B. **Manager's Report-** Mrs. Radford presented the Manager's Report as of September 30, 2010. The month proved to be okay for the paper library with a net income of (\$6,012.29). Monthly income was \$49,847.44 and expenses were \$55,859.73. Expenses were up due to both the annual shooting tournament and the field trip led by Dr. Sal Mazzullo. When the library net income is combined with the WDL net income of \$7,556.84, the net income for the month came to a gain of \$1,544.55. The Society has 713 members, the Library has 244 members and WDL has 177 members.

OLD BUSINESS

- A. **Employee Reviews-** A meeting has been scheduled between Mr. Callen, Mr. Morrison, Mr. Davis and Mrs. Radford on Wednesday, October 20 at noon.
- B. **Future Plans Committee-** Mr. Saenger, Roger Martin, Larry Richardson, Ryan Dixon and Paul Gunzelman had a meeting to determine where the library is heading in the future. They will review all information and present to the Board at a future date.
- C. **Energy Library Conference-** Mrs. Radford and Mr. Davis represented the KGS at the annual meeting in San Antonio. Mr. Davis noted that we should be looking out for scanners as there should be some good prices on them in the near future. May talk with Get Imaging and ask for a quote to go through the boxes in the back room from the KCC.
- D. **2011 Nominations-** The nomination committee has nominated the following individuals for the 2011 KGS Board election:
President- Kent Scribner and Dave Clothier; **Secretary-Treasurer-** Rocky Milford and Ganganath "G" Koralegedara;
Directors- Ryan Dixon and Rod Anderson

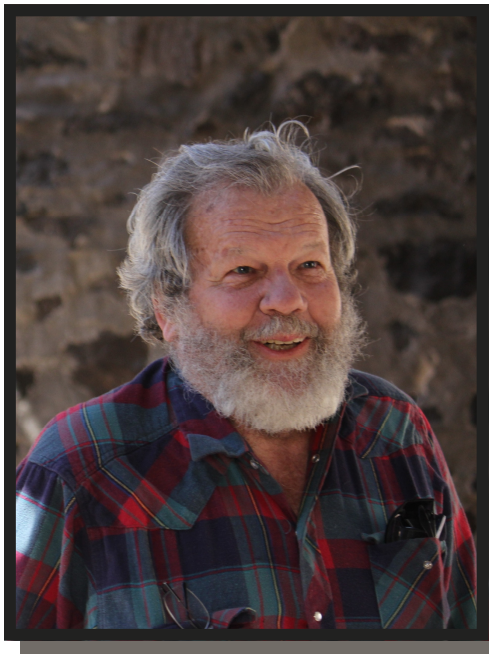
NEW BUSINESS

- A. **2011 Budget-** Mrs. Radford handed out the proposed 2011 KGS Budget. The Board reviewed the information, made corrections, and will put to a vote at the November meeting.

ADJOURNMENT- *Mr. Clothier motioned to adjourn the meeting at 1:21 p.m. and the motion passed unanimously.*

Respectfully submitted,

Marjorie Noel
Secretary



This will be an attempt to adequately tell the story of one of our locally prominent faculty members.

John was born in Rapid City, South Dakota in May of 1940. Both his father and mother had obtained degrees from Miami of Ohio, and John's father, Paul Gries moved to the Black Hills to begin a distinguished career as a professor at the South Dakota School of Mines. Long after his "retirement" at the then mandatory age of 65 years, Paul Gries continued to lead field trips, work as a water consultant and eventually publish the Roadside Guide to South Dakota. John had his first encounter with "petroleum geology" when his Dad, who was working for Magnolia at the time, took him to a "doghouse" when he was five years old. John's only brother Donald, now deceased, moved to Detroit where he designed jet engines for Williams International, eventually becoming a vice-president of the company.

John often accompanied his father in the field and after graduating from Rapid City High School he enrolled at the University of Wyoming where he obtained a BS degree in General Engineering and a degree in Geology. He then proceeded even further afield to the University of Texas where he received his PhD in 1970. John was fortunate in his scholastic career to have two outstanding instructors; Dr. Don Blackstone at Wyoming and Dr. Bill Muehlberger at Texas. He recently returned from a symposium with some of his fellow students and wild characters who carried out mapping in the frontier environment of Northern Mexico in the 60s under the direction of Dr. Muehlberger (who was the event's guest of honor at age 87.) Numerous reminiscences were exchanged- none of which can be repeated here.

While a student at UT, he had a variety of summer jobs including with Humble Oil and Refining Company at Miles City, Montana and with USGS in Idaho where one of his main tasks, besides mapping, was horse wrangling (plus one old army pack mule) for the last of the USGS pack strings.

While at the University of Texas, he met Robbie Rice, a Geology Masters student and they were married in 1968. Although now amiably divorced, they stay in contact. Robbie owns her own Petroleum exploration company in Denver and is an ex-president of AAPG. Their daughter Lynn, despite ample opportunity to hunt rocks and admire structural relationships, dips and strikes, faults and folds, has taken a different path. From her early years as an EMT technician, she has progressed –through a bilingual medical degree from McGill University in Quebec- to her present position as a research surgeon in reconstructive surgery in North Carolina.

After obtaining his PhD, John taught for one semester at the University of Texas, worked for a short period for the Bureau of Economic Geology in Austin, and eventually found himself joining the faculty at Wichita State University where he has taught a bit of everything but specializes in Structure, Field methods and Geo-hydrology. He's served multiple terms as Department Chair and leads the 5-week Geology Field camp each summer where, as any WSU Geology graduate can attest, he is a phenomenal campfire and Dutch oven cook.

Besides his teaching career, John has been very involved in a number of other activities: He is founder and president of the Great Plains Transportation Museum, located on East Douglas near the old Union Station. He has been Technical Advisor to the City Manager of Wichita on Groundwater Pollution and worked on pollution issues at McConnell Air Force Base. His work and interests have taken him at one time or another to all of the Rocky Mountain States, most of the other states, and the occasional jaunt to Morocco, Ethiopia and the East African Rift.

It is not all work and no play with John. Despite all the years of running Field Camp, he still likes to get out hiking, camping and discovering historic remnants of the old mining days in the Rockies (he's known to get particularly excited when locating the site of an old narrow gauge train wreck!). He's developed a recent interest in blacksmithing and is a member of the Great Plains Blacksmiths Association. He's always liked working with steam engines and pitches in to run and maintain them at various Kansas steam shows, and has frequently portrayed an early land surveyor with the Wichita Old Cowntown re-enactors.

It is obvious in discussing his career in teaching and being involved with various aspects of geology that he has enjoyed all phases. After a long career at WSU, he has students working throughout the world and delights in hearing about their latest endeavors. His advice to the young geologist entering the field: Be prepared for a wide variety of employment.

As to his future plans, they are simple: more geology, continued teaching and more travel to new exotic places with wife Toni. "You never know what lies around the next bend."



FYI

Are you aware??????

We keep a list of all the new data coming from the KCC to our Paper Library in an Excel Spreadsheet.

On the Home Page of www.kgslibrary.com

You will find a link "KCC Boxes & Logs"

If you click on this link, you will be able to download the list of new well data received.

If you do not find it in the file cabinets, please ask staff and they will assist you in locating the new data in our boxes.

Some of this data has not been entered yet, and we must keep track of it so

PLEASE — ALWAYS ASK STAFF TO HELP YOU.

Kansas Geological Society Candidates for Vice President 2011— President 2012



Dave Clothier

Education:

B.S. Geology, 1980
University of Kansas

Professional Experience:

Geological Manager—McCoy Petroleum, 2007-present
Senior Geologist—McCoy Petroleum, 2004-2006
Consulting Geologist—1998-2004
Staff Geologist—McCoy Petroleum, 1993-1998
Consulting Geologist—1983-1993
Staff Geologist—Texas Oil & Gas, Wichita, 1980-1983

Professional Affiliations:

Kansas Geological Society
Oklahoma Geological Society
AAPG
KIOGA

KGS Board and Committees:

Banquet Chairman
Board Secretary 2009
Board Treasurer 2010



Kent Scribner

Education:

Kansas State University---B.S. in Geology

Professional Experience:

Slawson Exploration Company, Inc.---1983-1996
Stelbar Oil Corporation, Inc.---1996-present

Professional Affiliations:

Kansas Geological Society
AAPG

KGS Board and Committees:

Secretary
Treasurer
Advertising Chairman
Picnic Chairman
Nomenclature Committee member

Kansas Geological Society Candidates for Secretary 2011 — Treasurer 2012



Ganganath Koralegedara



Rocky Milford

Education:

B Sc. Civil Engineering, 2000
University of Peradeniya, Sri Lanka
M.S. Earth Environmental & Physical Sciences, Wichita State
University 2009

Professional Experience:

Exploration/Well-site Geologist, Berexco 2008-Present
Geo-technician—Berexco 2007-2008
Teaching Asst. Dept. of Geology, WSU 2006-2008
Graduate Research Assistant—National Institute for Aviation
Research (NIAR), WSU 2005-2008
Civil Engineer, National Water Supply & Drainage Board, Sri
Lanka 2001-2004
Design / Construction Engineer, Tropical Waste Water Engineers
Pvt. Ltd., Kandy, Sri Lanka 2000-2001

Professional Affiliations:

AAPG
Kansas Geological Society
Geological Society of America
Society of Exploration Geophysicists
Kansas Geophysical Society
Society of Sedimentary Geology
Honor Society of Phi Kappa Phi
Institute of Engineers, Sri Lanka

KGS Board and Committees:

Bob Slamal Memorial Type Log Committee

Education:

B.S. Geology, 1982 Wichita State University

Professional Experience:

Ritchie Exploration, Inc., 1980-2004
Independent Geologist 2004-present.

Professional Affiliations:

Kansas Geological Society
Kansas Geological Foundation

KGS Board and Committees:

Walters Digital Library Committee
Bob Slamal Memorial Type Log Committee

Kansas Geological Society Candidates for Director At Large 2011 & 2012



Rod Andersen

Education:

B.S. Geology, Wichita State University
M.S. Geology, Wichita State University

Professional Experience:

Geological Consulting, 1982—Present
Vice President Petro-Dynamics, 1981-1982
Exploration Mgr, Kansas, Kennedy & Mitchell, 1979-1981
Chief Geologist, Mid-Continent Energy, 1978-1979
Geologist, Texas Oil & Gas Corp., 1977-1978
Geologist, Cities Service Oil Co., 1974-1977

Professional Affiliations:

Kansas Geological Society
Licensed Kansas Geologist #480

KGS Board and Committees:

Field Trip Committee



Ryan Dixon

Education:

B.S. Geology, Wichita State University, 2007
M.S. Earth, Environmental & Physical Sciences,
Wichita State University, est. 2011

Professional Experience:

Geologist, Dixon Energy Inc., 2007-Present
Geotechnician—2004-2007

Professional Affiliations:

Kansas Geological Society
AAPG
SEPM
GSA

KGS Board and Committees:

Bob Slamal Memorial Type Log Committee
Future Plans Committee

KANSAS GEOLOGICAL SOCIETY FIELD TRIP PHOTOS

Led by S.J. MAZZULLO, WICHITA STATE UNIV.
BRIAN W. WILHITE, WOOLSEY OPERATING CO., WICHITA
DARWIN R. BOARDMAN, OKLAHOMA STATE UNIV.
BEAU MORRIS, WICHITA STATE UNIV.
ROBERT TURNER, WICHITA STATE UNIV.
CORY GODWIN, OKLAHOMA STATE UNIV.

TOOK PLACE ON SEPTEMBER 24-26, 2010

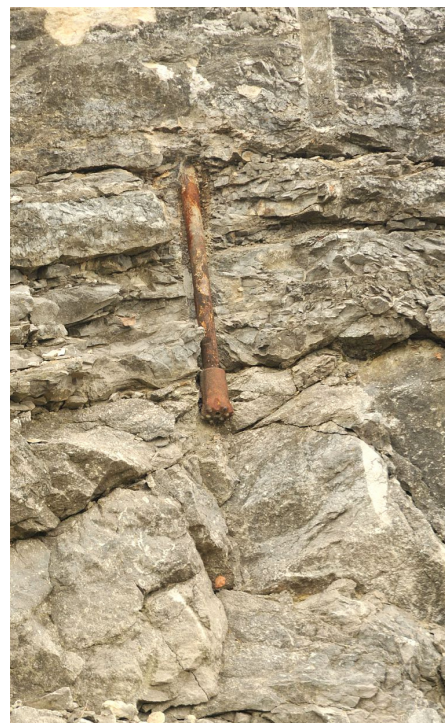
LITHOSTRATIGRAPHY AND CONODONT BIOSTRATIGRAPHY OF THE KINDERHOOKIAN TO OSAGEAN SERIES IN SW MISSOURI, NW ARKANSAS, AND NE OKLAHOMA

PARTICIPANTS

Joel Alberts, OCGS; Paul Carageannis, Seed Group; Steve Carl, Grand Mesa; Chris Carson, Cimarex Energy; Mike Clearman, Southwestern Energy; Jesse Crews, Berkley GeoImaging; Terryl Daniels, Arkansas Univ.; George Davenport, Belpport Oil; Clayton Davis, Vitruvian Exploration; Douglas Davis, American Energies; Gene Davis, Careus Oil & Gas; Ken Dean, Murfin Drilling; Drew Evans, Kansas State Univ.; Brian Fisher, Falcon Energy; Debra FitzGerald, Independent; Dan Fredlund, Falcon Energy; Kathy Gentry, SandRidge Energy; Will Gilliland, Independent; David Griffith, Independent; Wesley Hansen, Independent; Jerry Honas, Independent; Chris Johnson, Territory Resources; Drew Kreman, Arkansas Univ.; Richard Langston, Independent; Kurt Manfurt, Oklahoma Univ.; Shane Matson, Spyglass Energy; Chellie Mazzullo, Murfin Drilling; John Miesse, Pablo Energy; Paul Ramondetta, Vess Oil; Scott Robinson, Murfin Energy; John Rose, Rose Oil; Richard Saenz, Mid Continent Energy; John Shaida, Independent; John Shaida III, Independent; Steve Stribling, Grand Mesa; Rod Tillman, Independent; David Tschopp, Orion Exploration; Carl Vandervoort, Orion Exploration; Monica Williams, Vanguard Petroleum; Malleswara Yenugu, Oklahoma Univ.; Doy Zachry, Arkansas Univ., Mike Klein, Bus Driver



Brian Wilhite speaking to group



Drill bit left behind

Continued on page 22



Wonderful Porosity



Mystery solved! Why Geologists love rocks?
They are good for opening the beer!



Core Workshop held at Wichita State University



KGS Membership Survey Results

The following results were tabulated by Tim Pierce. The Bar Graphs were calculated by Rick Saenger.

Do you use the Digital Library? If not, why not?

There were 78 responses to this question

- 32 respondents are using the digital library
- 44 respondents are not using the digital library
- 2 respondents said they anticipate using it in the future

Some of the comments about why people were not using the library:

- Too expensive
- The data is of poor quality (an issue we have corrected)
- Data is not up to date
- Several respondents indicated they work Eastern KS and have no data available through the digital library
- Several respondents claimed to not be computer literate (I assume older members)
- Several respondents indicated they were not in the Oil and Gas business

Do you have suggestions for the digital library?

- Several respondents indicated a desire to have data in Eastern Kansas and also expand into surrounding states.
- Make it more affordable and faster
- Integrate new data faster (I believe we are working on a solution to this)
- One respondent wanted to have some way to pay a daily fee since he had need for the digital database for a short period of time then he used it infrequently.

How important are the KGS library services to you?

There were 88 responses to this question

- 58 respondents indicated the KGS library services were very important
- 16 respondents indicated the KGS library services were somewhat important
- 4 respondents indicated they were neutral about the KGS services
- 1 respondent indicated they thought the KGS services were somewhat unimportant
- 9 respondents indicated they do not use the KGS library

What KGS services are most important to you? (1-5 with 5 the highest importance)

Log Data (copies)

- 39 indicated (5) highest importance
- 6 indicated (4)
- 1 indicated (3)
- 5 indicated (2)
- 12 indicated (1)

What other services would you like to see the KGS provide?

- 3 respondents indicated they would like to see environmental data added.
- Seismic data added to be able to view or buy
- More field trips and social functions that would appeal to 20-30 year olds.
- More non-petroleum talks

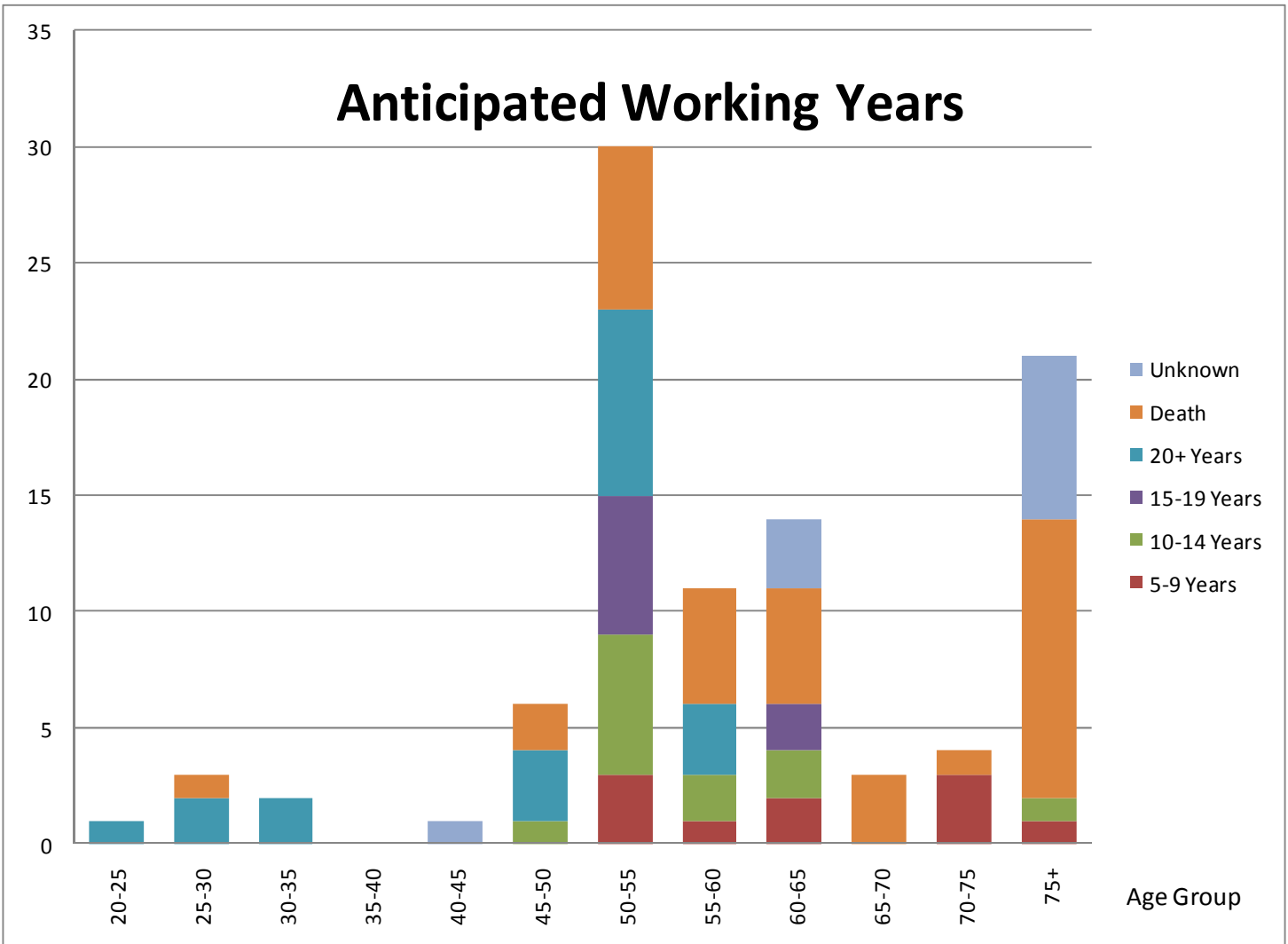
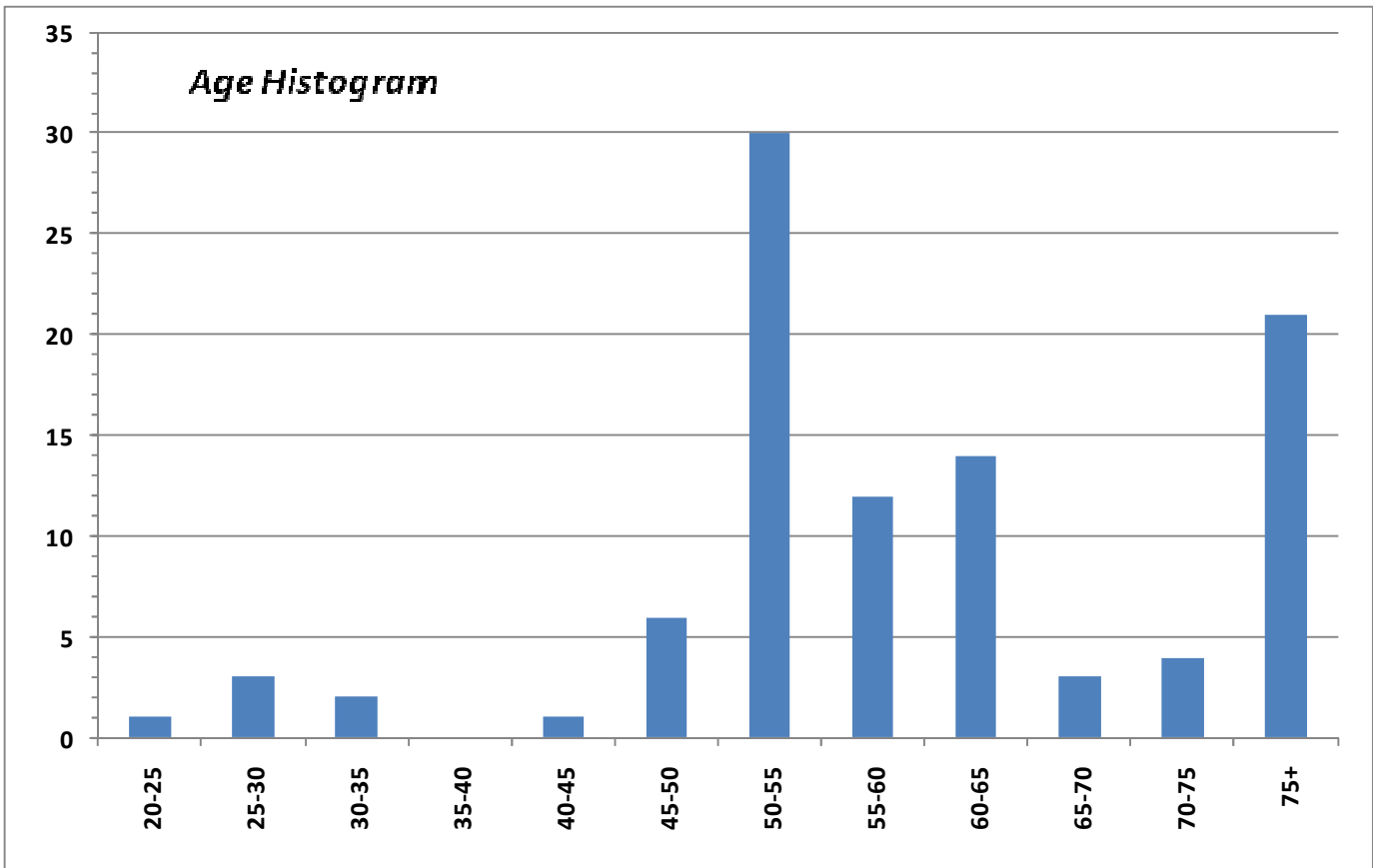
Some observations about these questions –

- Most of the respondents that do not use the digital library gave no reason, some seemed disgruntled at possibly a previous problem and/or are frustrated with (until recently) the poor quality for viewing data or lack of data.
- A few indicated they were not computer literate
- Several work areas without coverage.

Most respondents said the KGS library services were very important, those that said otherwise either worked other areas or did not do geologic research (some retired, some with other areas of interest)

Of the services most important, the data seemed to be of utmost importance.

Technical talks, Social events, Bulletin, and website were important to some it seems because it is the way they keep up to date on society members and business as they are probably retired and don't keep an office anymore. Or they don't live locally. It seemed that a number of members rely heavily on the library for work space, access to copying machines and research materials (reading room). Probably the most desired other service would be to expand our digital coverage to eastern KS and surrounding states.



Paul Gunzelman calculated the “comments” portion of the Survey as follows:

The majority of the membership had no comment on any of the questions.

Comments relating to the Digital Library were:

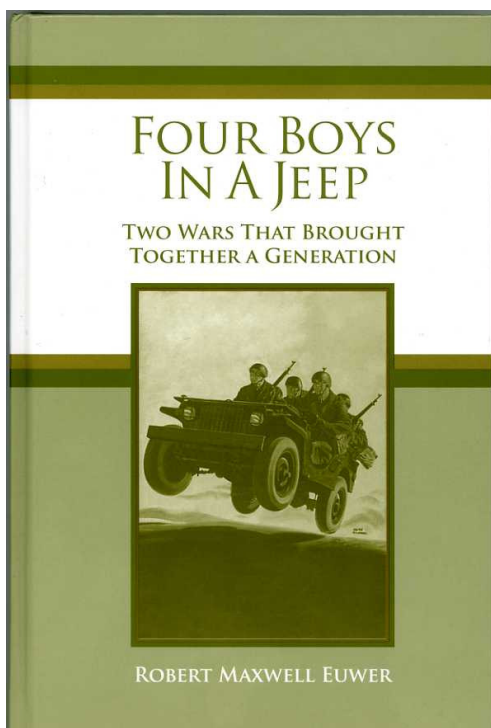
- Trouble reading logs scanned into WDL
- Wanted Eastern Kansas Data and data in counties of nearby states that border Kansas (2 comments)
- Faster download speeds, faster servers
- Get new data scanned into the library faster (2 comments)
- Cheaper subscription fees and cheaper download for full scale logs (3 comments)
- A couple of people said the WDL was much better than before and services were good.

Comments relating to the Paper Library:

- Seismic and environmental data wanted (3 comments)
- User friendly copier and large scale plotter wanted
- Red-Top data from counties of nearby states that border Kansas
- Library too noisy, staff needs to be more helpful to customers (3 comments)
- New data needs to get filed quicker (4 comments)
- Request for abstracts for WSU students
- Why does the KGS not reciprocates with DERL (2 comments)
- Wanted to know why the Bulletin no longer lists the new logs that have been received. Thought this might help boost sales.
(Please Read Rebecca’s letter in this issue or on page 17 for information on how to know what new data is in the library)

General comments:

- Many people were pleased with the quality of the library and the Bulletin (14 comments)
 - Requests for additional services were:
 - ◊Annual Shrimp Peel
 - ◊Free beer on Thursdays
 - ◊More field trips
 - Make annual banquet less expensive, break even. (3 comments)
-
-



One of our long time members, Mr. Robert M. Euwer, has donated a copy of his latest book, **Four Boys In A Jeep**, to our library. This is a follow-up to his previous book, **No Longer Forgotten** that is also in the KGS library reading room. Mr. Euwer has donated this book in honor and memory of past KGS members **Charles Slagle and Gerald Kathol**, whose World War II stories are featured in this book. These two men are a part of the 22 combat interviews for the book. While serving in World War II, their planes were shot down over Holland and Germany and they both were captured and served as POWs for the duration of the war.

Thank you Mr. Euwer, for this donation.

PROFESSIONAL DIRECTORY

Kirk Rundle
Consulting Geophysicist

3D Seismic Design, Acquisition to Processing QC.,
Interpretation and Analysis, Subsurface Integration
7340 W. 21st. N., Ste. 100
Wichita, Kansas 67205

Office: 316-721-1421 Fax: 316-721-1843
Email: kirk@rundlegeo.com

DON V. RIDER
Consulting Petroleum Geologist
Well Site Supervision
Geological Studies
Completions

8910 W. Central Park Ct.
Wichita, KS 67205

Office PH: 316-729-4445 Cell PH: 316-706-7199

Tel.: (972) 712-9036
Fax: (972) 712-0258
Cell: (214) 223-1784

LANG J. FUQUA
Certified Petroleum Geologist

4201 Tanglewood Ln.
Frisco, Texas 75035

WESLEY D. HANSEN
Consulting Geologist

Well site Supervision
Geologic Studies
212 N. Market, Ste 257
Wichita, Kansas 67202
Off: (316) 263-7313
Mobile: (316) 772-6188



KEVIN L. KESSLER

INDEPENDENT/CONSULTING PETROLEUM GEOLOGIST

WELLSITE SUPERVISION • GEOLOGIC RESEARCH
OIL & GAS PROSPECTS
KANSAS & EASTERN COLORADO

MAILING ADDRESS PHONE
1199 N. PONDEROSA RD. RES.: (316) 522-7338
BELLE PLAINE, KS 67013 MOBILE: (316) 706-6636
EMAIL: KKESSLER1199@AOL.COM

KGJ ENTERPRISES

Contract Oil & Gas Accounting &
Office Management

Kathryn G. James, MBA (316) 775-0954
4278 SW 100th ST. (316) 250-5989
Augusta, KS 67010 kgjames@onemain.com

ROGER L. MARTIN

Independent Petroleum Geologist

200 E 1st St, Ste 405, Wichita, KS 67202

Office 316-833-2722 Cell: 316-250-6970
KS Field Cell: 316-655-1227
Fax: 316-425-3829
Email: rogermartingeo@yahoo.com

ALFRED JAMES III
Petroleum Geologist
Kansas - Colorado - Utah

200 W. Douglas, Ste. 525, Wichita, Kansas 67202

SIPES # 1111
Office (316) 267-7592
alfred.james55@yahoo.com

M. Bradford Rine

Honorary Life Member—Kansas Geological Society

Licensed Geologist—KS. #204
Registered Professional Geologist—Wyo. # 189
Certified Geologist—A.A.P.G. # 2647
S.I.P.E.S. # 1584 S.P.E. #109833-4

PROSPECT EVALUATION • PROSPECT GENERATION
WELLSITE SUPERVISION • EXPERT TESTIMONY • OPERATIONS
PROPERTY EVALUATION • RESERVOIR STUDIES
DRLG./COMP. CONSULTATION

Suite 415
100 S. Main
Wichita, KS 67202

Office: (316) 262-5418
Fax: (316) 264-1328
Cell: (316) 250-5941



Paul Gunzelman
President/Geologist

Wichita, Kansas 316.634.6026
email p.gun@sbcglobal.net

ROBERT J. GUTRU

Geologist

300 Farmers & Bankers Bldg.
200 East First Street
Wichita, Kansas 67202
Off: (316) 265-3402

MELLAND ENGINEERING

Petroleum Engineering & Geological Consulting

James E. Melland, P.E.
Owner

Office: (620) 241-4621 Fax: (620) 241-2621
Cell Phone: (661) 319-5950
Email: jemelland@sbcglobal.net
Jamesm@mellandengineering.com

P.O. Box 841, McPherson, KS 67460

GeoCertified, LLC
 Professional Geological Services
 Hydrocarbon Detectors and Geologist Onsite 24/7
 Phone: (913) 441-2311 • Cell: (913) 544-7527
 www.geocertified.com

BRUCE GOLOB
 Geophysical Consultant

- ◆ 3D Seismic Interpretation, Mapping & Depth Conversion
- ◆ Well Log-to-Seismic Integration, Phase Matching
- ◆ Processing / Re-Processing Guidance & QC
- ◆ World-Wide Experience, Kansas Focus

Cell: 303-618-0972 Email: BruceGolob@yahoo.com

Blue Ribbon Drilling, LLC
 PO Box 279, Dewey, OK 74029

Phone and Fax: 918-534-2322
 John's Cell Phone: 918-440-9639
 Larry's Cell Phone: 918-440-9638
 Jeff's Cell Phone: 918-440-9647

Email: johnroutree@bratco-operating.com

PLAINSMEN LAND LLC

Cash available for lease acquisition
 Supporting Oil & Gas Prospects

Dan Earl Duggan	Steve Meese
817.347.9300	405.820.2442
danearl@dxwells.com	smeese3105@yahoo.com



Save The Date

**Friday
 January 22nd, 2011**

For the KGS Banquet

Free To Good Home (or office)

- Geophysical Journals
- AAPG Bulletins
- Journal of Sedimentary Petrology
- Shale Shakers
- GSA Bulletins

The Following Are For Sale

The Kansas Geological Foundation is offering electric logs on microfiche for sale. This data is from 9 western states. The microfiche will be sold as is, in bulk, by state (no cherry picking). Prices are proportionate to the number of fiche available.

Prices are firm, you haul or pay shipping

- North Dakota (~20,000 logs) - \$200.00
- Montana (~20,000 logs) - \$200.00
- Utah (~20,000 logs) - \$200.00
- Colorado—\$25.00
- S. Dakota—\$50.00
- New Mexico—\$50.00
- Idaho—\$25.00
- Arizona—\$25.00
- Oklahoma—\$25.00

WESTERN KANSAS
SOUTHERN NEBRASKA



EASTERN COLORADO
OKLAHOMA & TEXAS PANHANDLES

10 Drilling Rigs

10 Well Service Rigs & Roustabout Services

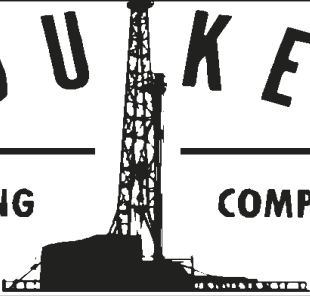
For contract information, please contact:
Blaine Miller / Drilling Department
316-858-8607 (Direct) or 316-267-3241

For contract information, please contact:
Alan Hays, Well Service Sprvsr.
785-421-2103 or 785-567-8739 (cell)

250 N. Water #300—Wichita, KS 67202

East Highway 24—Hill City, KS 67642

DUKE



DRILLING COMPANY

ROTARY DRILLING CONTRACTOR

620 Hubbard PO Box 823
Great Bend, KS 67530
Phone 620-793-8366

100 S. Main, Ste. 410
Wichita, KS 67202
Phone 316-267-1331
Fax 316-267-5180



Tomcat Drilling

3 Rotary Rigs - Rotary Drilling Contractor
Southwest Kansas • Oklahoma & Texas Panhandles

Tim Sanders 316-262-8554 phone
316-259-1652 Cell
tjsanders@tomcat.kscoxmail.com

100 S. Main, Suite 508
Wichita, KS 67202

Great Bend (620) 793-5861 Ness City (785) 798-3843 Medicine Lodge (620) 886-5926



Acidizing Available at Medicine Lodge District

Russell (785) 483-2627 Oakley (785) 672-3452

Lockhart Geophysical Company

Call (303) 592-5220 FAX (303) 592-5225
Or E-mail lockden@xpert.net

2D & 3D Seismic Acquisition
Vibroseis Specialists




JAPEX GDAPS-4 Distributed System

We'll give you seismic excellence

MBC

WELL LOGGING & LEASING
UNMANNED GAS DETECTORS
MUD LOGGING
CERTIFIED INSTRUMENT TECH
SERVING THE KAN-O-TEC AREA SINCE 1990

AUSTIN GARNER MARLA GARNER
24-HOUR PHONE (620) 873-2953
MEADE, KANSAS



STORES

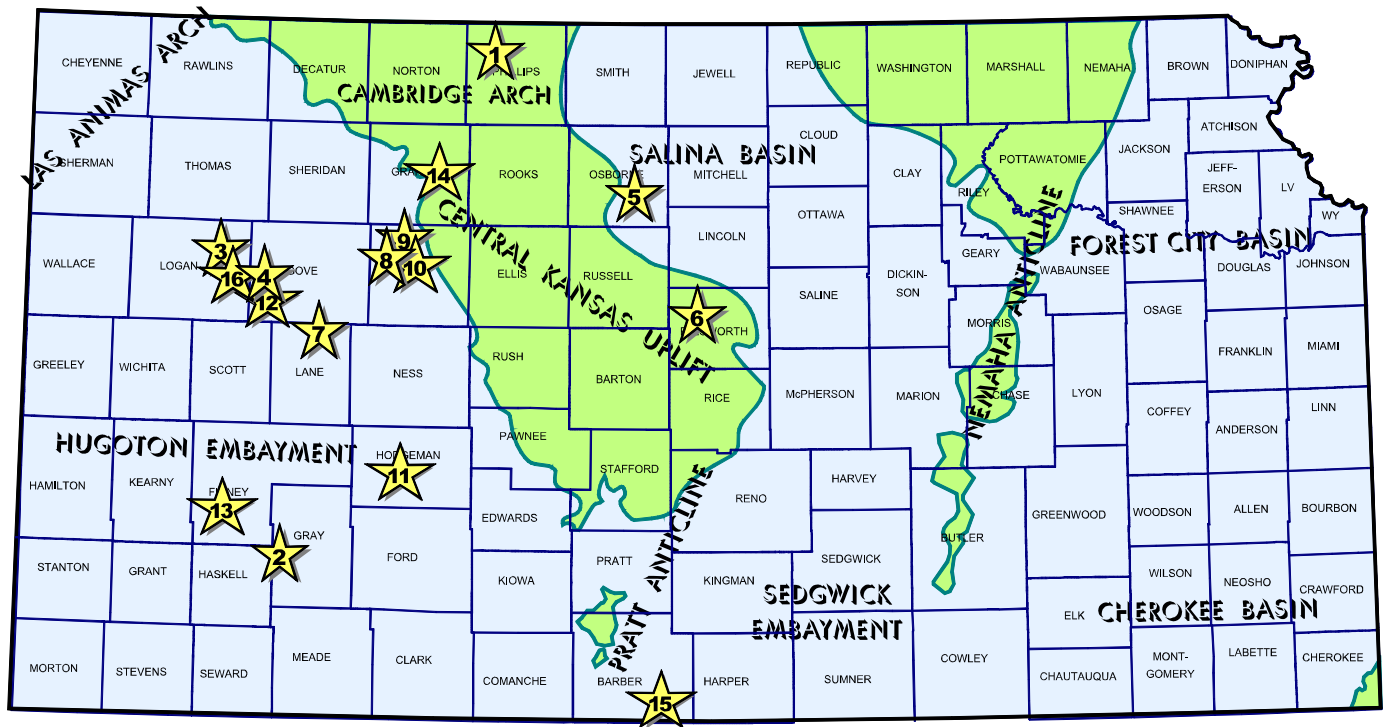
Ness City, KS 800-589-5733
El Dorado, KS 316-321-9323
Garden City, KS 877-976-1700
Spivey, KS 316-532-5261
McCook, NE 308-345-1542

FULL LINE SUPPLY STORE
With Pump Shop
Offering New & Used
Pipe, Equip. & Fittings
Employee Owned

SALES OFFICES

Wichita, KS 800-777-7672
Great Bend, KS 316-792-3130
Mob: 316-786-4255

New Office
Hugoton, KS 620-428-6604



(1) **Bach Oil Production**, Alma (NE), has opened a new unnamed oil field in **Phillips** County with the completion of the No. 1 Kauk - Vankooten Unit, located in the SE/4 of section 3-T2s- R19W. Operator perforated the Lansing F and I zones for commercial pay between depths of 3436 to 3440 and 3508 to 3517 feet respectively. The wildcat well was put on pump July 30, 2010 for a daily potential of 35 barrels of oil and 5 barrels of water per day. Discovery site lies over one mile northwest of producing wells in the Huffstutter West field, or nearly six miles southwest of Woodruff, Kansas.

(2) **Plymouth Exploration LLC**, Tulsa (OK), has completed their Nichols 2-32 for 8.5 barrels of oil and 20 barrels of water per day to establish a new unnamed oil field in **Gray** county. Operator has discovered crude reserves in the Morrow formation from perfs made between 5044 to 5079 feet, as well as, from Mississippian Chester at 5129 to 5132 feet and Saint Louis B from 5253 to 5274 feet. Rotary total depth was stopped at 5389 feet. Well location is in the NW/4 of section 32- T27s- R30W, nearly three miles northwest of the Renegade field, or slightly over eight miles north of the town of Copeland, Kansas.

(3) **Grand Mesa Operating Company**, Wichita (KS), has discovered two new Cherokee oil fields in north central Kansas. In the SE/4 of section 26- T12s- R32W, **Logan** County, the No. 1-26 G. Andersen is producing an unknown amount of crude from the Johnson Zone. The 4730 foot deep well found oil deposits over two miles north of the established Stratford field, about ten miles south of the city of Logan, Kansas. The new field has not been named.

(4) In **Gove** County, **Grand Mesa's** Hess 1-16 is on pump for unknown potential at site located in the NW/4 of section 16- T14s- R31W, or almost seventeen miles southwest of Gove, Kansas. The

wildcat well was drilled to a total depth of 4750 feet. Operator found oil deposits again in the Johnson Zone, nearly two miles northeast of existing production in the Thies Ranch field. The new field has not been named.

(5) **Brungardt Oil & Leasing**, Russell (KS), is producing an undisclosed amount of crude from ten feet of open hole in the Lansing-Kansas City C zone at the No. 1 Kendig A. New discovery was made in the NE/4 of section 32- T9s- R12W, over one mile north of existing producers in the Potterville field. Shields Drilling bottomed the well at a total depth of 3290 feet. The new unnamed oil field is located fourteen miles south of Osborne, Kansas.

(6) **Mai Oil Operations, Inc.**, Dallas (TX), has discovered new Lansing-Kansas City reserves in **Ellsworth** County at their Vodraska No. 1, spotted in the E/2 SE of section 7- T15s- R9W, almost seven miles northwest of Ellsworth community. It was earlier reported in error as being Arbuckle reserves (IOGsi 9/13/2010). The new Black Wolf Southeast pool discovery was drilled to rotary total depth of 3090 feet by Southwind Drilling tools. The new find is situated nearly one and one-half miles southeast of the abandoned Black Wolf field (LKC oil).

(7) **Flatirons Resources LLC**, Denver (CO), has successfully offset the new Demand Northwest pool discovery well with the firm's Lawrence No. 32-23, NE/4 of section 23- T16s- R28W, in **Lane** County. The discovery well found oil deposits in the Marmaton (Pawnee) formation (IOGsi 9/13/2010). New pay has been established from the Cherokee formation at the first confirmation well, the Munsell Lawrence Unit No. 21-23, located in the NW/4 of section 23. The well was drilled to a total depth of 4570 feet. Production volume has not been released. Field area lies almost three miles northwest of Pendennis, Kansas.

(8) **Murfin Drilling Company, Inc.**, Wichita (KS), has reported three new Lansing-Kansas City oil discoveries in **Trego** County. First, the No. 2-16 Hendricks, spotted in the NW/4 of section 16- T12s- R24W, was completed for an unknown potential about five and one-half miles west of Wakeeney, Kansas. The wildcat found oil deposits nearly one mile southeast of the firm's recently established Humberdinck field (LKC oil). Rotary total depth is 4570 feet. The new field has been named Humberdinck Southeast.

(10) Nearly one mile northeast of the Humberdinck field, **Murfin's** SHU No. 1-4 is producing an unknown amount of crude in the NW/4 of section 4- T12s- R24W. The well was drilled to a total depth of 4145 feet. Also, in the SW/4 of section 13- T12s- R24W, the Nimz No. 1-13 is also producing oil. The 4525 foot deep well lies almost three and one-half miles southeast of the Humberdinck field. No other details have been released. The new fields is named Humberdinck Southeast.

(11) **Redland Resources, Inc.**, Oklahoma City (OK), is producing oil from the Mississippian formation at the Wyatt No. 30-15, located in the SE/4 of section 30- T23s- R24W, in **Hodgeman** county. The well establishes new production nearly two miles northwest of the Purdyville Northwest oil field (Mississippian). Duke Drilling bottomed the well at a total depth of 5351 feet. The new Gray Hawk field is located about six and one-half miles southwest of Jetmore, Kansas.

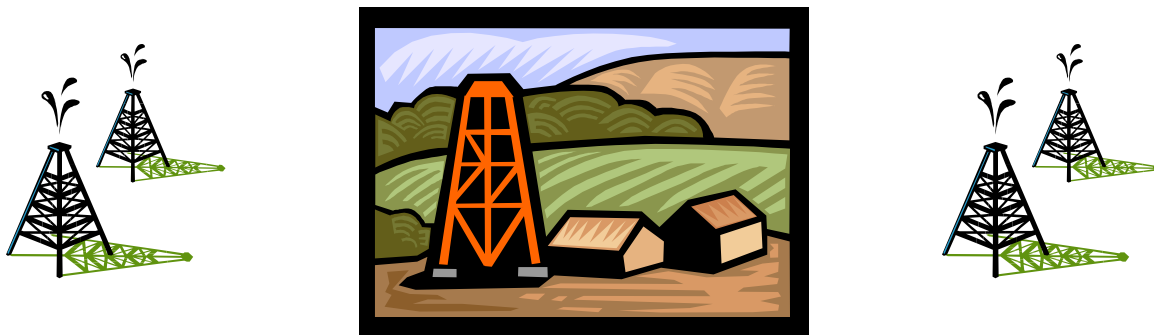
(12) **Lario Oil and Gas Company**, Wichita (KS), has completed the Thies Ranch No. 1-33 in **Gove** County for an undisclosed potential. The wildcat well, spotted in the NE/4 of section 33- T14s- R31W, has discovered new reserves in the Lansing-Kansas City formation with total depth stopped at 4400 feet. The new Pyramids North field lies almost two miles northeast of abandoned oil production in the Pyramids field (Cherokee oil). Site lies slightly over two and one-half miles southeast of Lario's recently established Thies Ranch field in section 19, which has produced over 24,000 barrels of oil from the LKC group since its founding in August, 2008. Their latest find is located eight miles northwest of Healy, Kansas.

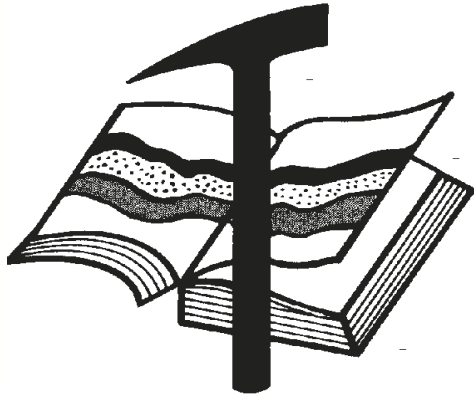
(13) **OXY USA**, Houston (TX), is pumping an unknown amount of crude oil from the Lansing-Kansas City and Marmaton limestones at their No. 1 Hands A, located in the SE/4 of section 33- T25s- R33W, in **Finney** County. The new Coyote pool opener found oil deposits nearly two miles southeast of the Plymell oil field (Marmaton), about nine miles southwest of Garden City, Kansas. Operator drilled the well to a total depth of 5250 feet.

(14) **Production Drilling, Inc.**, Hays (KS), is pumping 50 barrels of oil daily, no water, at the Rhian No. 2 in **Graham** County. The Luck field stepout well is producing crude from three sets of perforations in the Lansing-Kansas City formation from 3422 to 3458 feet. Total depth is 3650 feet. Operator commenced production on September 14, 2010 at site located about two miles west of Bogue, Kansas in the SW/4 of section 12- T8s- R22W.

(15) **Molz Oil Company**, Kiowa (KS), is producing 100 barrels of oil, 200 barrels of water and flowing 200 Mcf gas daily at the Molz No. 14, located in the SW/4 of section 31- T34s- R11W, in **Barber** County. The Stranathan pool development well is producing from Cherokee perforations from 4730 to 4770 feet. Total depth was stopped in the Viola formation at 5517 feet. Field area lies nearly four and one-half miles northeast of Hardtner, Kansas.

(16) **Grand Mesa Operating Company**, Wichita (KS), has discovered new oil reserves in the Lansing-Kansas City, Marmaton and Cherokee formations at their M. Andersen No. 1-3 in **Logan** County. The new wildcat pool discovery was drilled at site in the NW/4 of section 3- T13s- R32W, almost eleven and one-half miles south of Oakley, Kansas. Oil deposits were found over three-quarters mile east of the recently established High Hat field (Marmaton and Cherokee oil), opened by Murfin Drilling Company last year. The well was bottomed in the Mississippian at 4700 feet. The new field has not been named.





Kansas Geological Foundation

Web Site: www.kgfoundation.org

**212 North Market
Wichita, Kansas 67202**

A not-for-profit educational and scientific corporation

GOALS:

- promote geology and earth science
- preserve geological records
- establish memorials and endowments
- support field trips and seminars
- financial aid and grants to students

PLEASE HELP SUPPORT THE FOUNDATION

Kansas Geological Foundation Services

The Kansas Geological Foundation provides the following services as a part of the organization's commitment to educate the public regarding earth science.

Speaker's Bureau

A list of speakers available to talk about various aspects of geology may be obtained by contacting Janice Bright at the KGS Library, 265-8676. This service is free to the public.

DVD/Videotape Library

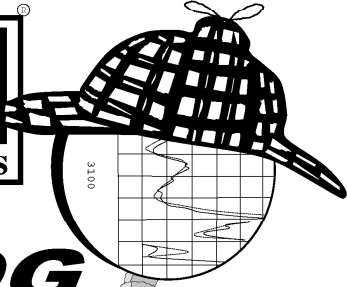
The KGF maintains a DVD & videotape library focused primarily on the various fields of earth science. These tapes may be checked out without charge by the public. To obtain a list of tapes, please contact the KGS Library, 212 N. Market, Ste. 100, Wichita, KS 67202, or call Janice Bright at 265-8676.

The Kansas Geological Foundation was founded in March, 1989 as a not-for-profit corporation under the guidelines of section 501(c)(3) of the tax code to provide individuals and corporations the opportunity to further the science of geology. It is dedicated to providing charitable, scientific, literary and educational opportunities in the field of geology for the professional geologist as well as the general public.

KGF can receive in-kind donations through which the donor may receive a tax deduction. Of equal importance, the KGF provides the financial resources to sort, process and file this data at the KGS library. If you have a donation to make, please contact the KGF at 265-8676.

Your tax-deductible membership donation helps to defray the cost of processing donations and to support public education programs about the science of geology. Annual membership begins at \$50.00 per year. Donations of \$100.00 or more are encouraged through the following clubs:

Century Club	\$ 100 to \$ 499
\$500 Club	\$ 500 to \$ 999
Millennium Club	\$1000 to \$5000
President's Club	\$5000 and over



LOG
Sleuth
2000

AND RASTER IMAGE
WELL LOGS

OVER
5 MILLION
LOGS
AVAILABLE

1-800-310-6451

SALES@MJLOGS.COM

CALGARY • DENVER

U.S.A.
LOGS FOR:

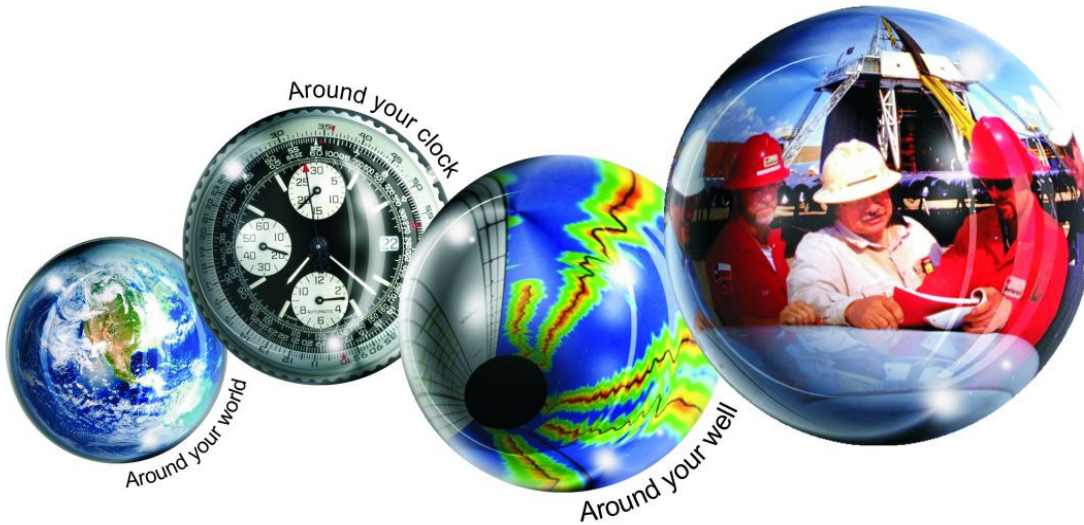
ALABAMA
ALASKA
ARKANSAS
ARIZONA
CALIFORNIA
COLORADO
FLORIDA
IDAHO
ILLINOIS
INDIANA
KANSAS
LOUISIANA
MICHIGAN
MISSOURI
MISSISSIPPI
MONTANA
NEBRASKA
NEVADA
NEW MEXICO
NORTH DAKOTA
OKLAHOMA
OREGON
SOUTH DAKOTA
TEXAS
UTAH
WASHINGTON
WEST VIRGINIA
WYOMING

CANADIAN
LOGS FOR:

ALBERTA
BRITISH COLUMBIA
SASKATCHEWAN
MANITOBA
FEDERAL AREAS

Kansas Geological Foundation Memorials

KGS Member	Date Deceased	Memorial Established	KGS Member	Date Deceased	Memorial Established
Dan Bowles	09/89	1990	Floyd W. "Bud" Mallonee	10/00	2000
John Brewer	10/89	1990	Ralph W. Ruuwe	09/00	2000
George Bruce	08/89	1990	Robert L. Slamal	02/01	2001
Robert Gebhart	01/90	1990	Jerold E. Jespersen	06/01	2001
Ray Anderson, Jr.	11/90	1990	William A. Sladek	06/01	2001
Harold McNeil	03/91	1991	Harlan B. Dixon	06/01	2001
Millard W. Smith	08/91	1991	Edward B. Donnelly	08/01	2001
Clinton Engstrand	09/91	1991	Richard P. Nixon	02/02	2002
M.F. "Ted" Bear	10/91	1991	Robert W. Frensley	12/01	2002
James & Kathryn Gould	11/91	1991	Gerald W. Zorger	01/02	2002
E. Gail Carpenter	06/91	1993	Don L. Calvin	03/02	2002
Benton Brooks	09/92	1992	Claud Sheats	02/02	2002
Robert C. Armstrong	01/93	1993	Merle Britting	2002	2002
Nancy Lorenz	02/93	1993	Harold Trapp	11/02	2002
Norman R. Stewart	07/93	1993	Donald M. Brown	11/02	2003
Robert W. Watchous	12/93	1993	Elwyn Nagel	03/03	2003
J. George Klein	07/94	1994	Robert Noll	09/03	2003
Harold C.J. Terhune	01/95	1995	Benny Singleton	09/03	2003
Carl Todd	01/95	1995	Jay Dirks	2003	2003
Don R. Pate	03/95	1995	J. Mark Richardson	02/04	2004
R. James Gear	05/95	1995	John "Jack" Barwick	02/01	2004
Vernon Hess	06/95	1995	Richard Roby	03/04	2004
E. K. Edmiston	06/95	1995	Ruth Bell Steinberg	2004	2004
Jack Rine	07/95	1995	Gordon Keen	03/04	2004
Lee Cornell	08/95	1995	Lloyd Tarrant	05/04	2004
John Graves	10/95	1995	Robert J. "Rob" Dietterich	08/96	2004
Wilson Rains	10/95	1995	Mervyn Mace	12/04	2004
Heber Beardmore, Jr.	09/96	1996	Donald Hoy Smith	04/05	2005
Elmer "Lucky" Opfer	12/96	1996	Richard M. Foley	06/05	2005
Raymond M. Goodin	01/97	1997	Wayne Brinegar	06/05	2005
Donald F. Moore	10/92	1997	Charles B. Moore	09/96	2005
Gerald J. Kathol	03/97	1997	Jack Heathman	05/06	2006
James D. Davies	08/88	1997	Charles Kaiser	09/06	2006
R. Kenneth Smith	04/97	1997	Rod Sweetman	08/06	2006
Robert L. Dilts	05/97	1997	Karl Becker	10/06	2006
Delmer L. Powers	06/72	1997	Frank Hamlin	10/06	2006
Gene Falkowski	11/97	1997	Marvin Douglas	12/06	2006
Arthur (Bill) Jacques	01/98	1998	Robert W. Hammond	04/07	2007
Bus Woods	01/98	1998	Eldon Frazey	04/07	2007
Frank M. Brooks	03/98	1998	Pete Amstutz	05/07	2007
Robert F. Walters	04/98	1998	Charles Spradlin	05/07	2007
Stephen Powell	04/98	1998	Donald R. "Bob" Douglass	09/07	2007
Deane Jirrels	05/98	1998	Vincent Hiebsch	11/07	2007
William G. Iversen	07/98	1998	Glen C. Thrasher	03/08	2008
Ann E. Watchous	08/98	1998	Peg Walters	06/08	2008
W.R. "Bill" Murfin	09/98	1998	Theodore "Ted" Sandberg	07/08	2008
Donald L. Hellar	11/98	1998	James Ralstin	11/08	2008
Joseph E. Rakaskas	01/99	1999	Earl Brandt	04/09	2009
Charles W. Steincamp	02/99	1999	Walter DeLozier	05/09	2009
Robert and Betty Glover	10/96	1998	Donald D. Strong	01/10	2010
Howard E. Schwerdtfeger	11/98	1999	John Stone	02/10	2010
W. W. "Brick" Wakefield	03/99	1999	Craig Caulk	03/10	2010
V. Richard Hoover	01/00	2000	Joseph E. Moreland, Jr.	03/10	2010
Warren E. Tomlinson	01/00	2000	Gene Garmon	03/10	2010
James A. Morris	01/00	2000	James F. Dilts	05/10	2010
Eric H. Jager	03/00	2000	Jerry Pike	05/10	2010
Kenneth W. Johnson	03/00	2000	Donald Hollar	06/10	2010
Dean C. Schaake	03/00	2000	Delbert Costa	08/10	2010
Fred S. Lillibridge	05/00	2000	John Tanner	08/10	2010
Jerry A. Langrehr	07/00	2000			
Clark A. Roach	07/00	2000			



All Around You

Weatherford has always been driven by your needs.

Now, with the addition of Precision Energy Services we're continuing to build a world of skills, services and technologies that revolve – and evolve – around you.

The result?

An expanded global network of 25,000 people, 730 service bases and 87 manufacturing facilities in 100 countries.

This increased local knowledge and service is there to support you anywhere, anytime. From midday in the Middle East to midnight in the middle of nowhere.

And with greatly strengthened capabilities in the critical evaluation skills of directional drilling and wireline logging, we can do even more to improve the profitability and productivity of your wells.

To see how our sphere of services can work for you, visit www.weatherford.com or contact either your Weatherford or former Precision Energy Services representative.

Drilling | Evaluation | Completion | Production | Intervention

© 2006 Weatherford International Ltd. All rights reserved. Incorporates proprietary and patented Weatherford technology.

CHANGE SERVICE REQUESTED

KGS BULLETIN
 Nov.—Dec. 2010

November 2010

Sun	Mon	Tue	Wed	Thu	Fri	Sat
	1	2 <i>Tech Talk</i>	3	4	5	6
7	8	9 <i>KGS Board</i>	10	11	12	13
14	15	16 <i>Tech Talk</i>	17	18	19	20
21	22	23	24	25	26	27
				Library closed—Thanksgiving		
28	29	30 <i>Tech Talk</i>				

December 2010

Sun	Mon	Tue	Wed	Thu	Fri	Sat
			1 <i>KGS Ballots Due</i>	2	3	4
5	6	7 <i>Tech Talk</i>	8	9	10	11
12	13	14 <i>KGS Board</i>	15	16	17	18
19	20	21 <i>Tech Talk</i>	22	23	24	25
					Library closed	
26	27	28	29	30	31	